

# CERTIFICATE OF LOCATION OF GOVERNMENT CORNER

NORTHEAST \_\_\_\_\_ Corner of Section 29 , Township 108N , Range 39W

5th Principal Meridian, State of Minnesota, County of MURRAY

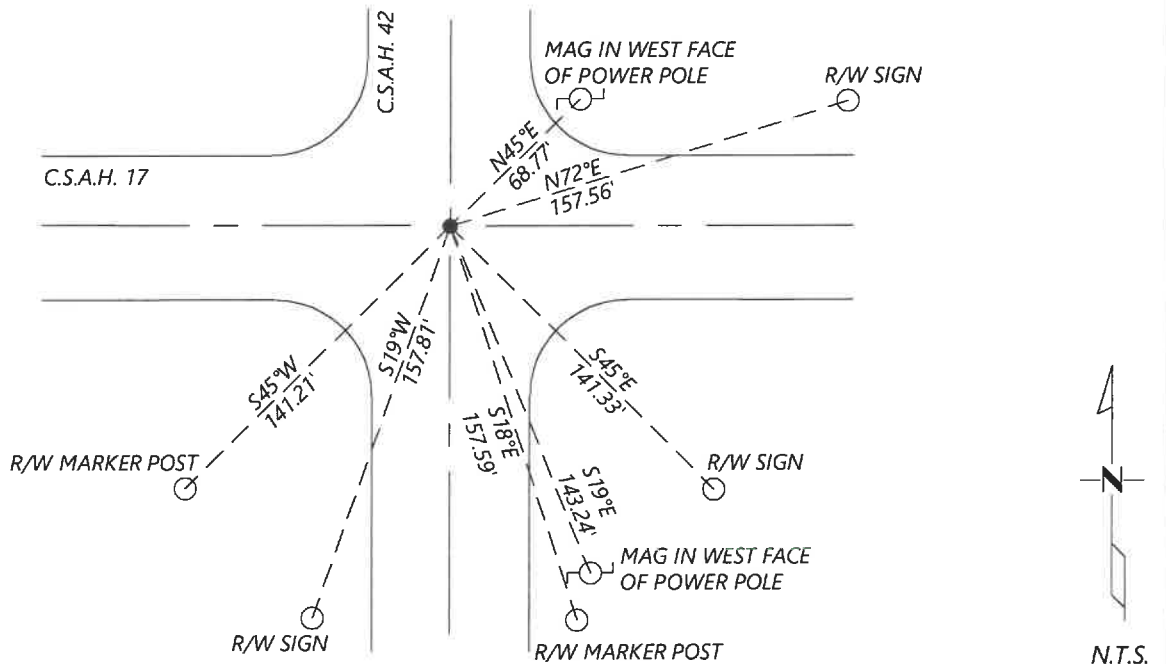
At the corner location shown on the sketch:

On 8/27/2020 found a NO. 4 REBAR WITHOUT CAP, DOWN 0.2FT  
DATE

left monument as found       lowered monument       removed monument (explain)

On \_\_\_\_\_ placed a \_\_\_\_\_  
DATE

SKETCH OF REFERENCE TIES



Statement of evidence for this corner location is on back of this page.

I hereby certify that this document was researched and prepared by me or under my direct supervision and that I am a licensed Land Surveyor under the laws of the State of Minnesota.

Signature [Handwritten Signature]

Date 6/17/2021 License No. 45874

Title:

- Land Surveyor       Professional Engineer  
 County Surveyor       County Engineer

OFFICE OF THE COUNTY RECORDER

County of Murray

I hereby certify that this document was filed in the Co.

Recorder's office at \_\_\_\_\_ M. on the \_\_\_\_\_ day of \_\_\_\_\_ A.D. 20 \_\_\_\_\_

County Recorder [Handwritten Signature: Karen Brown]

by JUN 22 2021, Deputy

DOCUMENT NO. \_\_\_\_\_

**Statement of Evidence:**

Northeast Corner of Section 29, Township 108 North, Range 39 West, 5th Principal Meridian, Murray County, Minnesota.

No GLO Notes.

*Undated survey record for Section 28 shows a stone at the corner.*

1940 *Highway Department records show that an iron pin was set over the stone.*

<i>Nail &amp; cap in corner post</i>	<i>NE</i>	<i>52.40ft</i>
<i>Nail &amp; cap in corner post</i>	<i>NW</i>	<i>45.30ft</i>

1978 *April, Highway Department records show that an iron pin was set over stone.*

<i>Steel pin in slope</i>	<i>SW</i>	<i>54.11ft</i>
<i>Nail &amp; cap in power pole</i>	<i>NE</i>	<i>61.43ft</i>
<i>Nail &amp; cap in blazed tree</i>	<i>NW</i>	<i>73.89ft</i>

1999 *May, CSAH 42 plans show the corner at PI station 9+659.786*

2004 *August, A survey in Section 21 by Lyle Moseng shows that he found a monument at the corner. He lists coordinates:  
N: 205723.04 E: 558685.74*

2020 *September, Westwood Professional Services searched and found a No. 4 rebar. Did not recover any Highway Department ties but the location fits the CSAH 42 stationing very well and also fits coordinates per 2004 survey. Accepted found monument and set new reference ties.*

Analysis of the recovered data, field evidence and survey measurements, indicates that the monument found is the correct perpetuation of this corner. For additional information concerning this corner please contact Westwood Professional Services.